

## Autodesk 6

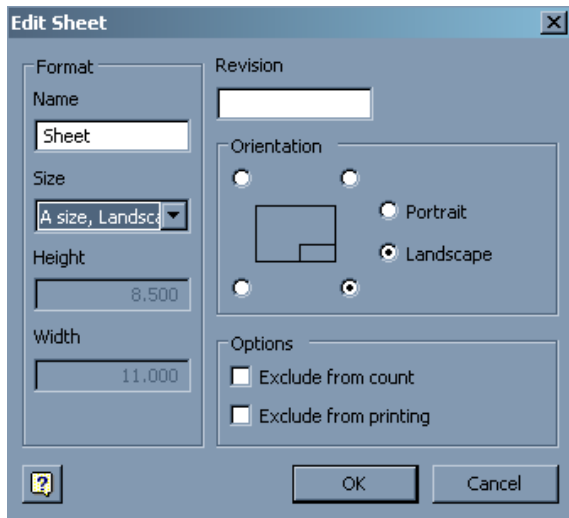
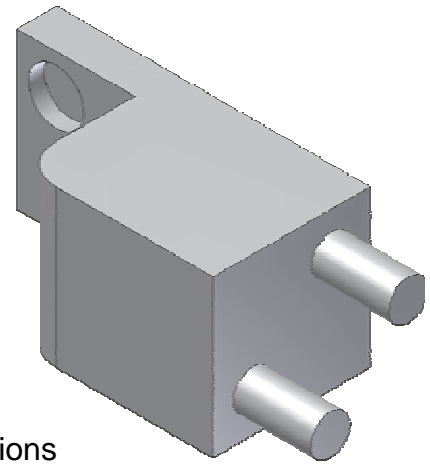
Open Autodesk 6 Classwork.

Open a **New Drawing File**

File – New – ANSI (inches).dwg

Change the Sheet Size

- Model History
- Sheet 1
- Edit Sheet
- Choose A Landscape, notice sheet height & width dimensions
- Click on ANSI-Large – delete title bar



### • **Base View**

- Choose the appropriate file
- Preview the difference views and choose the best “front” view.
- Choose the Front (XY) view
- Hover mouse over drawing to see preview. Adjust ratio if necessary. Click to place the base view in lower left corner.
- Click and drag the base view into a better position if necessary.

### **Projected View**

- Click to place the top, right, and isometric views. If they don't preview automatically,

select the front view to activate, then projected views will be available.

- After placing the boundary boxes for each view, right-click Create.
- Practice moving the views around, deleting views and re-creating (or re-sizing) them.

Change to the **Drawing Annotation Panel**.

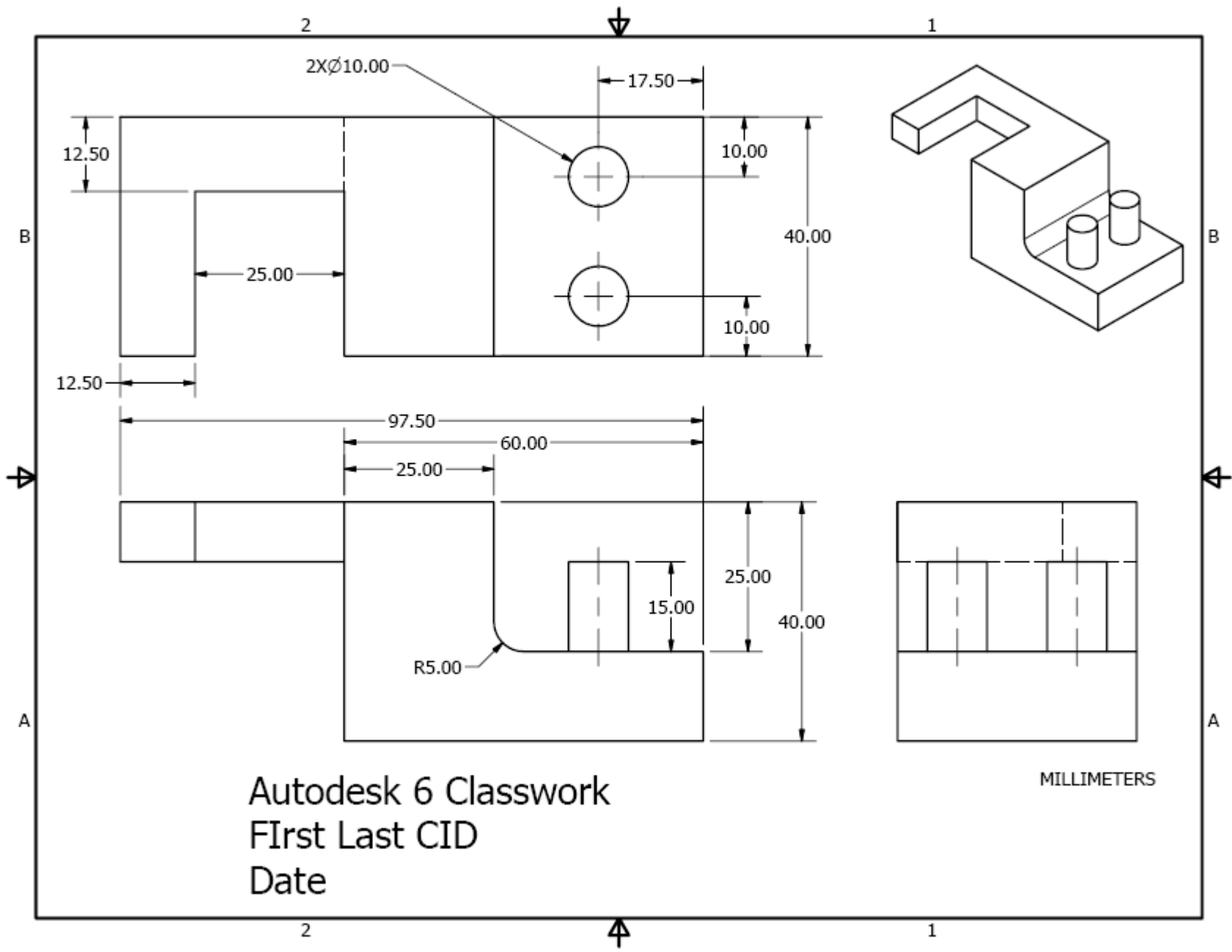


- Add **Text** for title bar. Edit font size if necessary.
- Add **Text** to display the units.

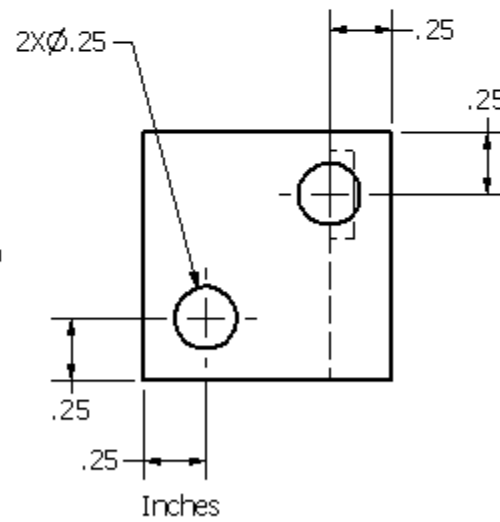
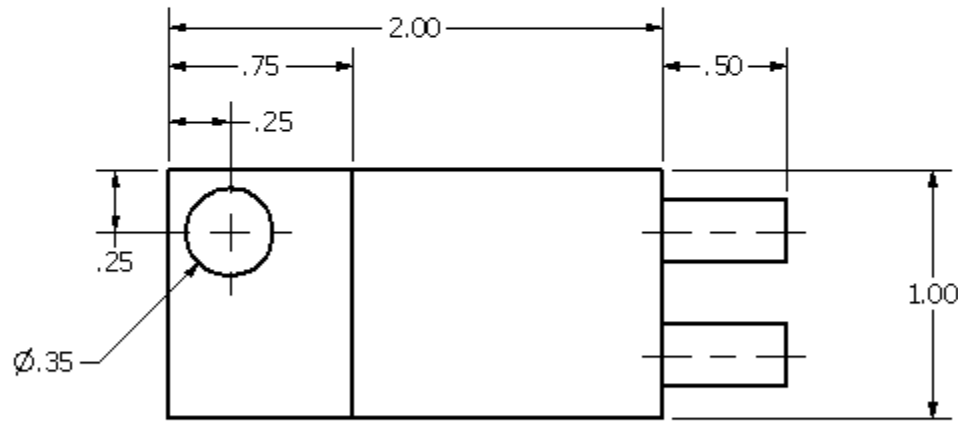
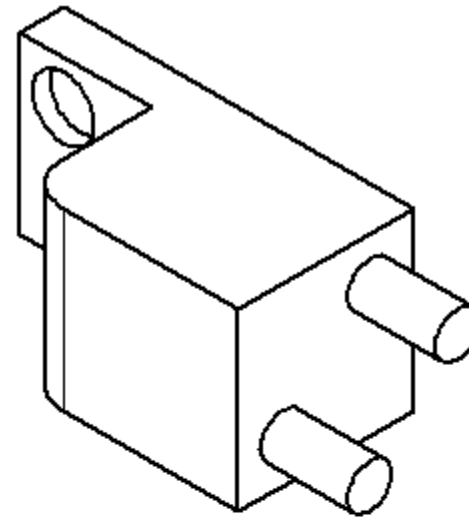
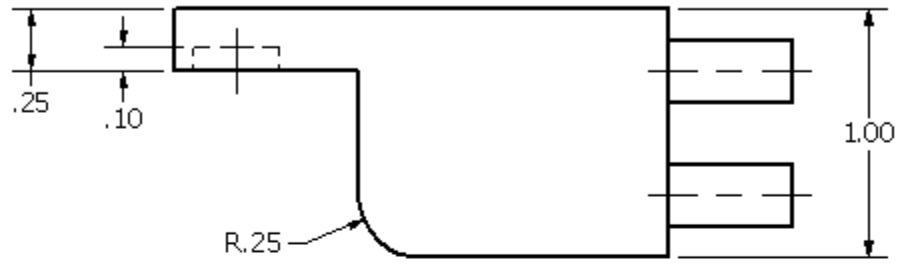
### **General Dimensions**

- Add dimensions on the views using the conventions learned when sketching.
- Right click on one dimension, **edit dimension style**, notice the units, click the Text tab, and change the vertical linear dimension to display text horizontally.
- Add **center marks** and **centerline** bisectors.
- Right click on a diameter measurement, click Edit, then add **2X** text before <<>> to indicate that there are two matching holes.
- Dimensions can be moved by clicking/holding on the number, and dragging to a new location.
- Editing the dimensions of the original object (and saving) will automatically update the drawing file.

Autodesk 6



**Autodesk 6**



**Autodesk 6 Classwork**  
**First Last CID**  
**Date**